

CONNECTION



Sam & Eleanor Meiner

Join us this Easter—April 3, 2021

Join the Easter Bunny and the City of Belle Isle for a Drive-thru Easter event on April 3, 2021 from 9:00am until noon at the Cornerstone Charter Academy parking lot on Randolph Ave. An Easter character will be handing out a candy goodie bag, an Easter egg with a surprise and a plush Easter Bunny to each child to enjoy this Easter season (while supplies last.) Hosted by the City of Belle Isle Special Events Committee. Masks and social distancing will be observed.

Sam Meiner, a longtime resident of Belle Isle, passed away earlier this year. His Mission in life was to bring joy to medically challenged children and Seniors through the creation of the Easter Bunny Foundation. All plush Easter Bunnies at this event have been generously donated by the Foundation in Sam's honor.

Founded by Sam and Eleanor Meiner in 1995, The Easter Bunny Foundation is a 501(c)(3) organization and has grown to a nationwide initiative. Officially endorsed by the National Sheriffs' Association in 2005, more than 100 Sheriffs' offices and police departments throughout the United States partner with the Foundation to spread the excitement and wonderment that only a personal visit from the Easter Bunny can bring. Please visit them on Facebook at The Easter Bunny Foundation. ■

City of Belle Isle Newsletter

TABLE OF CONTENTS

Page 2 CITY ORDINANCES:
After-the-Fact-Fees, Golf Carts

Page 3 PD—Reduce the Risk of Danger

Page 4 Financial Transparency Center

Page 5 Code Enforcement:
Know Your Watering Days

Page 6 Belle Isle Police Department:
Recognize the Signs!

Page 7 Commissioner Update

Page 8 Beware of Scams

Page 9 GET INVOLVED:
Boards and Committees

Page 10 -11 Best Management Practices
Stormwater 101 / Street Sweeping

CITY ORDINANCES — 2020-2021

Belle Isle Code of Ordinance



municode

CONNECTING YOU & YOUR COMMUNITY

https://library.municode.com/fl/belle_isle/codes/code_of_ordinances



ORDINANCE 21-01—Adopted

Permits are essential because they provide a permanent record of the work performed and inspections conducted on the project. It is necessary to meet code standards to ensure safety for current and future owners. Codes are not only written for safety reasons but also environmental and energy-saving considerations. Your home or business it is an investment. If a construction project does not comply with the codes, the investment value could be reduced. Also, property insurers may not cover work or damages caused by work done without permits and inspections. Lastly, the City could make the owner take down the unpermitted work, and therefore the project is more expensive.

Upon presenting the proposed Ordinance, the Orlando Regional Realtor Association (ORRA) submitted a letter to the City Council listing concerns that ORRA had with the proposed Ordinance 21-01, on “after the fact” (ATF) permits and the associated fines with ATF permits. As a result, the City staff met with ORRA to discuss possible resolutions to their concerns.

It was agreed that a separate procedural policy would be developed to address ATF permits and to working without a permit. As part of this policy, ORRA and the City will work on an outreach program to inform realtors and their clients of the procedures. The revised version of Ordinance 21-01 only contains the penalties for failure to obtain a permit as outlined in Section 6-5, *Penalty for failure to obtain a municipal code permit.* ■

ORDINANCE 21-02—Under Council Consideration

On February 23, 2021, the P&Z Board reviewed the changes to the sign code recommended by the City staff. This change deals with temporary signs and brings the sign code into compliance with federal guidelines for eliminating regulation by content based signage.

ORDINANCE NO. 21-02—AN ORDINANCE OF THE CITY OF BELLE ISLE, FLORIDA; AMENDING THE CITY’S SIGN REGULATIONS UNDER CHAPTER 52 OF THE CITY CODE; PROVIDING DEFINITIONS; AMENDING AND ADDING REGULATIONS RELATED TO TEMPORARY SIGNS, PROTECTION OF FIRST AMENDMENT RIGHTS, AND OTHER MATTERS RELATED TO SIGNS; PROVIDING FOR CODIFICATION, SEVERABILITY, CONFLICTS, AND AN EFFECTIVE DATE.



ORDINANCE 20-11—Adopted

Recently, the City of Belle Isle approved the use of golf carts within City limits. If you are interested in registering your golf cart, please contact the Belle Isle Police Department at 407-240-2473.

Before calling, please make sure to visit the City’s website and review the Golf Cart Guide for Residents. The form will also explain what is required equipment on the golf cart. You must have all required equipment installed and working correctly before passing inspection.

You will also find a map of the City to help understand where golf carts are NOT permitted. Please make sure you read and understand the guide entirely before operating a golf cart within the City. ■

**Solid Waste & Recycling:
JJ Waste 407-298-3932**

YARD waste - Monday

- Use Trash cans OR bundles.
- Maximum of 10: Trash cans OR Bundles OR Combination
- NO Plastic bags**

TRASH - Tuesday/Friday

- Maximum of 10 containers

RECYCLING - Wednesday

- NO Styrofoam packaging and NO Plastic bags
- Glass containers – Remove top
- Plastic containers – Leave top on

Reduce the Risk of Danger to both the Officer and You!

If you are stopped by a police officer, here are some guidelines that both drivers and passengers can follow to help reduce the risk of danger to both the officer and you! Safety is the top priority!

Safety Is Top Priority!

- Always carry proper identification: a valid driver's license, proof of vehicle registration, and current proof of insurance.
- When being signaled by a police officer to stop, *look for the nearest place to position your vehicle as far out of the lane of traffic as possible*. Generally, it would be best if you always pulled to the right side of the roadway or to where the shoulder is wider unless otherwise directed. Be sure to signal your move to the side of the roadway by using your turn signal.
- After you stop, please stay in your vehicle and keep your seat belt fastened until the officer has seen you wearing it. If you are asked to exit the vehicle, do it slowly.
- Roll down your window all the way so that the officer can communicate with you.
- Remain calm, and please stop using your cell phone and turn down your vehicle's radio so that the officer can speak with you. If there are passengers, also ask them to remain quiet and cooperative with all reasonable requests. Please do not let anyone in your vehicle make threatening statements or gestures to the officers.
- Please understand that there are times when officers have to speak loudly because they are near traffic and other noisy conditions. The officers are not yelling at you or trying to intimidate you.
- If it is dark out, you can turn on your vehicle's interior lights when the stop occurs and before the officer reaches your vehicle so that the officer can easily see that all is in order.
- It would help if you understood that most officers would use a patrol car's headlights and spotlights during darkness for safety purposes. It helps illuminate the interior of your vehicle.
- Keep your hands in view, preferably on the steering wheel. Ask your passengers to place their hands in plain sights, such as on their laps.
- Do not duck down or make sudden movements, especially toward the floorboard, rear seat, or passenger side of the vehicle. The officer may interpret these movements as an attempt to hide illegal items or to obtain a weapon.

- Do not immediately reach into your glove box, console pocket, or backseat. Wait for the officer to request your license, registration, and proof of insurance. If the documents are out of reach, tell the officer where they are and slowly reach them. Otherwise, keep your hands on the steering wheel.
- Give the officer a chance to explain the violation. Most officers are trained to ask for identification and registration first before explaining the stop. This is to avoid debating the reason for the stop before acquiring this necessary information.
- Answer all questions honestly. Information about prior arrests or traffic violations is easily verified via the police dispatcher.
- If the charge or citation is not clear, ask for an explanation respectfully.
- Don't be alarmed if another police officer arrives at the stop. Police officers often stop to see if the officer needs any assistance during a traffic stop.
- There is no need to apologize repeatedly or elaborate on the offense. Be civil and polite. If any particular circumstances are surrounding the incident, provide a straight, honest, and up-front explanation.
Avoid provoking the officer or showing off in front of other occupants. Do not interfere with the questioning or the arresting of other occupants. Comply with the officer first and then, if needed, seek an explanation.

Do not argue with the officer at the roadside. If you disagree with the citation or the officer's actions, discuss it later with the law enforcement agency, an attorney, or the judge.





CITY OF BELLE ISLE FINANCIAL TRANSPARENCY CENTER

powered by CLEARGOV

DEMOGRAPHIC SNAPSHOT



Population

6,865

▲ 11% HIGHER THAN STATE MEDIAN



Median Home Value

\$312,900

▲ 59% HIGHER THAN STATE MEDIAN



Median Household Income

\$85,873

▲ 61% HIGHER THAN STATE MEDIAN

[View More Demographics](#)

2018 US Census Bureau, American Community Survey. Home value data includes all types of owner-occupied housing.

FINANCIAL OVERVIEW

[Download Financials](#)

Fund: Government-wide Activities

REVENUES

\$12M
(budgeted)

\$1,742
per capita/year

[View Breakdown](#)



EXPENSES

\$12M
(budgeted)

\$1,742
per capita/year

[View Breakdown](#)

REVENUES vs EXPENSES

The City of Belle Isle has partnered with ClearGov, a transparency platform, to launch an infographic-based fiscal dashboard in order to provide a more inclusive and transparent budget and financial process. Please use the link below to view current year and historical budget data and financial reports, including the Comprehensive Annual Financial Report (CAFR).

In addition, the city partnered with ClearGov to provide financial transparency and a business intelligence tool that dynamically presents the City's revenues and expenses, from historical trends to line item level details. Community members can utilize ClearGov to gain a better understanding of the City's budget and actual financial data.

Visit <https://www.cleargov.com/florida/orange/city/belle-isle>

Visit <https://www.cleargov.com/florida/orange/city/belle-isle>

Plan Ahead: Appointment Required

Many of the city's services are available anytime at www.belleislefl.gov. If you still need to meet with a city employee directly, appointments are required. Please call the City directly or email yquiceno@belleislefl.gov. When you arrive for your scheduled appointment, you will notice safety precautions put in place to ensure physical distancing. This includes plexiglass barrier at service counter, sanitizer station and the requirement of wearing masks or face coverings when in any city building. Thanks for helping us ensure that our customers, and our city employees, stay healthy. ■

The City of Belle Isle
1600 Nela Avenue
Belle Isle, FL 32809
407-851-7730
www.belleislefl.gov

Robyn Winters
Code Enforcement Officer
rwinters@belleislefl.gov

MORE DETAILS

Know when and how to water!

A new schedule will start on March 14 and run until November.

For more information on watering restrictions and exceptions, you can contact St. John's Water Management District at www.sjrwmd.com/wateringrestrictions or by calling 1-800-232-0904.



Joins us on
April 3, 2021 for a
City of Belle Isle
Drive-Thru
Easter Event

Code Enforcement Update



WATERING SCHEDULE



Below is the new watering schedule:

- Properties with *odd-numbered* addresses are permitted to water on **Saturday only**
- Properties with *even-numbered* addresses are permitted to water on **Sunday only**
- *Non-residential* properties are permitted to water on **Tuesday only**.
- Watering is **prohibited** between **10:00 a.m. and 4:00 p.m.**
- Water for no more than one hour per zone
- Water only when needed and not during the hottest part of the day.
- Irrigation should be limited to no more than $\frac{3}{4}$ inch of water per zone per irrigation day
- Restrictions apply to private wells and pumps, ground or surface water, and water from public and private utilities.

Exceptions:

- Irrigation using a micro-spray, micro-jet drop, or bubbler irrigation system is allowed anytime.
- Irrigation of new landscape is allowed at any time of the day on any day for the initial 30 days and every other day for the next 30 days for a total of one 60 day period.
- Watering in chemicals, including insecticides, pesticides, fertilizers, fungicides, and herbicides when required by law, the manufacturer, or best management practices, is allowed anytime within 24 hours of application.
- Irrigation systems may be operated anytime for maintenance and

repair – should not exceed 20 minutes per hour per zone.

- Irrigation using a hand-held hose equipped with a spray nozzle that can be adjusted, so water flows, only as needed, is allowed anytime.
- Discharge of water from a water-to-air air-conditioning unit or other water-dependent cooling system is not limited.
- The use of water from a reclaimed water system is allowed anytime. A reclaimed water system includes systems in which the primary source is reclaimed water, which may or may not supplement another source during peak demand periods.

This is a good time of the year to make sure automatic irrigation systems are working correctly. Check to make sure the sprinkler heads are watering only the lawn and not the sidewalks or the streets – they often get damaged during summer's massive growing and mowing season.

In the fall, slow down on fertilizing and avoid applying high nitrogen fertilizer, which can promote tender grass growth that may not tolerate colder temperatures.

If your lawn turns slightly brown during the winter, it may be a regular part of its winter dormancy. Avoid over-watering to correct for this. In many cases, the lawn will return thick and green in the spring. Spot treat for pests as needed. Chemicals can cause damage or stress grass, which increases its need for water.

Tree leaves fall with the change of seasons. It is best to remove massive amounts of leaves from your lawn to avoid smothering the grass. ■

RECOGNIZE THE SIGNS

Protect Your Every Day!

<https://www.dhs.gov/see-something-say-something/recognize-the-signs>

Belle Isle Police Department



If you see something, say something!

If you want to keep your neighborhood safe, the police must be notified of criminal activity so that we can take care of it.

For Emergencies, Always call 911

An emergency is a serious crime in progress.

For Non-Emergencies, Call 407-836-4357

A non-emergency may be a suspicious person walking around or a crime over with, like a car that was broken into overnight.

When you call the police, you DO NOT have to give them your name or phone number. Tell the operator that you are making an anonymous report because you are in fear for your safety and your family's safety, but please send the police.

“Si Ves Algo, Di Algo”

Si ves algo, denúncialo.

Si desea mantener su vecindario seguro, la policía debe ser notificada de la actividad delictiva para que podamos encargarnos de ella.

Para emergencias, Siempre llame al 911

Una emergencia es un delito grave en curso.

Para situaciones que no son de emergencia, Llame al 407-836-4357

Una situación que no es de emergencia puede ser una persona sospechosa caminando o un crimen, como un automóvil que fue asaltado durante la noche.

Cuando llame a la policía, NO tiene que darles su nombre o número de teléfono. Dígame al operador que está haciendo una denuncia anónima porque teme por su seguridad y la de su familia, pero envíe a la policía.

Thank you for the Experience

This is my 5th and last term serving as your District 5 Commissioner. Being a City Commissioner was an honor, sometimes frustrating but mostly enjoyable. I leave with the City staff and Council in good hands. I no longer have the energy to serve effectively at age 85 years old. There are plenty of people qualified and younger to serve. Our Belle Isle City Staff quality is outstanding, and this includes our worthy City Police Department. You have a good man to serve in my place.



Commissioner Harvey Readey—District 5

While Serving, many important decisions such as upgrading the Nela Isle Bridge, funding unique solutions for city-wide drainage issues, and forming our police department taking the place of limited Sheriffs protection. We stayed with the excellent Orange County Fire Department, continued contracting dependable garbage collection, engineering, and legal services.

Creating the Cornerstone Charter School was a great accomplishment I initially resisted but now fully endorse. The City later purchased the first-class school facility from the Methodist Church for the new charter school; this was a remarkable achievement and helped the Methodist Church from a difficult financial situation. The recent purchase of the Pine Castle Branch of the Bank of America promises benefits to Belle Isle's citizens. This purchase may help to keep the millage rate low.

I served with good people, including former Mayors Bill Brooks, Lydia Pisano. Our present Mayor Nicholas Fouraker is also effective and worthy of being our Mayor. We have hired a great experienced City Manager, Mr. Bob Francis. He is a leader, a clear thinker, and gets things done.

Each person on our all voluntary City Council is, in my opinion, qualified and each in their way serving the citizens as best they know how. No particular interest here that I am aware of, like the so-called swamp in Washington. They are friendly and responsive. To Yolanda, City Clerk, I thank you from the bottom of my heart for the many things you do far beyond your duties as City Clerk. You are very special, gifted, and loving. Your family is fortunate to have you, and so are we.

Indeed we have a representative democracy in Belle Isle, so thanks for the experience. ■

Important Numbers

Belle Isle Police Department
Office: Mon-Fri (407) 240-2473
Non-Emergency (407) 836-4357
Police Emergencies 9-1-1

Universal Engineering
Building Permits
(407) 581-8161

Zoning Permit Review
April Fisher, Planner
aprilfisher73@gmail.com

Nicholas Fouraker
mayor@belleislefl.gov
407-717-7868

Council Members

District 1
Ed Gold
egold@belleislefl.gov
407-717-6772

District 2
Anthony Carugno
acarugno@belleislefl.gov
407-717-6947

District 3
Karl Shuck
district3@belleislefl.gov
407-717-7846

District 4
Mike Sims
district4@belleislefl.gov
407-717-7855

District 5
Harv Readey
hreadey@belleislefl.gov
407-717-7860

District 6
Jim Partin
district6@belleislefl.gov
407-717-6545

District 7
Sue Nielsen
snielsen@belleislefl.gov
407-717-8017

City Hall (407) 851-7730
Bob Francis
City Manager
bfrancis@belleislefl.gov



New Traffic Control on Hoffner

Drivers and Pedestrians on Hoffner Avenue will soon see a new addition to the roadway. At the crosswalk located at Monet and Hoffner's intersection, the City will be installing a Rectangular Rapid-Flashing Beacon (RRFB). RRFBs are pedestrian-actuated conspicuity enhancements used in combination with a pedestrian, school, or trail crossing warning sign to improve safety at uncontrolled, marked crosswalks. The device includes two rectangular-shaped yellow indications, each with an LED-array-based light source, that flash with high frequency when activated. The BIPD will be out at this location enforcing the crosswalk laws, so be aware that once the beacon starts flashing, you MUST stop until the beacon turns off. Even if that pedestrian is out of your travel lane, you MUST remain at a complete stop until the beacon shuts off!!

Additional RRFBs will be installed on Hoffner Avenue at Pleasure Island Road and Peninsular Drive in the near future. ■

Beware of Fake Checks/ Bogus Offers

If you get a call or got the call, go to this website and file a report.

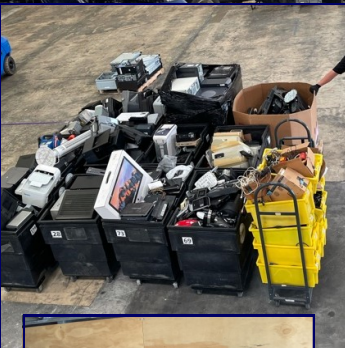
City Manager Bob Francis

Last month I received a call from someone claiming to be from Publishers Clearing House (PCH) and that I WON. They had many details and information of mine and wanted to meet me at my house to give me my check for \$15 million and a new Mercedes Benz car. They did not want any information such as bank or credit card. He even gave me his PCH ID number. WOW!!! I just got on the gravy train!!! Maybe even Terry Bradshaw or Marie Osmond will show up!!!

SCAM. The first thing I did was to go to the PCH website. Here's what they said: If someone contacts you claiming to be from PCH and tells you that you've won a prize— then asks you to send a payment or money card to claim the prize – STOP! You have not heard from the real PCH.

Recently, PCH has been hearing reports that scammers are accessing and using their real employees' names in their criminal attempts to deceive you. Names you've come to know and recognize, such as Dave Sayer, Todd Sloane, and Danielle Lam – all real members of their famous PCH Prize Patrol.

PCH employees would never contact you personally or in advance to notify you of a prize award. PCH's SuperPrize is presented just the way you see it in our popular TV commercials, "live and in-person" by their Prize Patrol, with balloons, a bouquet of roses, and check in hand – – and with no advance notification! ■



The City held an **Electronics Recycling Event** on February 20, 2021. The event was very successful in collecting just about anything that was related to electronics. As a result, the organizers collected 815 lbs in laptops, 956 lbs in Desktops, 565 lbs in wire and 256 lbs in flat-panel TVs. Plus various other items such as batteries, speakers, CRT computer monitors, old TVs, cell phones, even boom boxes. They also shredded hard drives on the spot.

The Solid Waste and Recycling Committee would like to thank French Lanham of Urban ERecycling for their participation and for taking so many items. The Committee is planning another E-Recycling day in August. More details to come. ■

Beware Phone Scams

We continue to get reports that phone scammers are calling customers trying to get money. Here are a few things to keep in mind:

Scammer claiming you are behind on your PNM bill? Text PNM by sending #BAL to 78766 to get your account balance.

If you are asked to purchase pre-paid gift cards, it is a scam.

Check your bill. If you have **not** received a bold disconnect notice on page 1, it's a scam.

If you are ever uncertain whether a caller is from PNM, hang up and initiate the call yourself by calling PNM at **1-888-DIAL-PNM (1-888-342-5766)**.

Several Belle Isle residents have reported being victims of identity theft and criminals using their information to obtain fraudulent credit cards. If you put a block on your credit, no one can receive a new card.

Protect yourself from identity theft or fraudulent credit schemes by checking your credit frequently or placing an alert on your credit records by contacting one of the three major credit bureaus listed below. Take the extra time and minimal expense to protect yourself. ■

Equifax: 1-888-766-0008 * Experian: 1-888-397-3742
TransUnion: 1-800-680-7289

Are you legally allowed to leave a note in a neighbor's mailbox?



It's a federal crime to place anything but appropriate mail pieces or packages in a mailbox. Many won't make a big stink about it, but you need to be aware of the repercussion. You can also trespass from a property IF the mailbox is on private property, for example, on the porch or a mail slot on a door. Bottom line, talk to your neighbor don't do something that's going to get you in trouble.

It is a violation of Title 18 section 1775 - Whoever knowingly and willfully deposits any mailable matter such as statements of accounts, circulars, sale bills, or other like matter, on which no postage has been paid, in any letterbox established, approved, or accepted by the Postal Service for the receipt or delivery of mail matter on any mail route with intent to avoid payment of lawful postage thereon, shall for each such offense be fined under this title. ■



GET INVOLVED IN CITY BOARDS & COMMITTEES

Meetings are open to the public. Need more information? Contact the City Clerk at yquiceno@belleislefl.gov.

A connected and involved community makes a stronger and happier place to live.

CITY OF BELLE ISLE, FL

Questions to any Board or Committee can be forwarded to the City Clerk at yquiceno@belleislefl.gov

CITY COUNCIL (Seven Districts—Elected At Large)

Meet on the first and third Tuesday every month @ 6:30 pm at City Hall Chambers 1600 Nela Avenue

Mayor—Nicholas Fouraker:
mayor@belleislefl.gov / 407-717-7868

District 1—Comm Ed Gold: egold@belleislefl.gov / 407-717-6772

District 2—Comm Anthony Carugno
acarugno@belleislefl.gov / 407-717 6947

District 3—Comm Karl Shuck:
district3@belleislefl.gov / 407-717-7846

District 4—Comm Mike Sims
district4@belleislefl.gov / 407-717 7855

District 5—Comm Harvey Readey:
hreadey@belleislefl.gov / 407-717-7860

District 6—Comm Jim Partin:
district6@belleislefl.gov / 407-717-6545

District 7—Comm Sue Nielsen:
sn Nielsen@belleislefl.gov / 407-717-8017



PLANNING & ZONING BOARD: Appointed by District by City Council

The Board is responsible for overseeing the compliance of the city ordinances.

Meet on the fourth Tuesday every month @ 6:30 pm at City Hall Chambers 1600 Nela Avenue

Attorney: Dan Langley
District 1—David Woods
District 2—Christopher Shenefelt

District 3—OPEN
District 4—Randy Holihan
District 5—Rainey Lane

District 6—Andrew Thompson
District 7—Leonard Hobbs

TREE BOARD (Seven Members: Appointed At-large by City Council)

The Tree Board protects our tree canopy, offer educational and informational speaking events on environmental issues.

Meet on the second Monday every month @ 6:30 pm at City Hall Chambers 1600 Nela Avenue

Board member—Doug DeYoung
Board member—Holly Bobrowski
Board member—George Travis

Board member—Richard Weinsier
Board member—Emily Wakely

Board member—OPEN
Board member—Christopher Stalder

POLICE ADVISORY BOARD: Appointed by District by City Council

Meet on the fourth Tuesday every month @ 6:30 pm at City Hall Chambers 1600 Nela Avenue

The Advisory Board assist our Police Department with communication throughout the community.

District 1—Horton Johnson
District 2—Andrew Dunigan
District 3—Allen Haskins

District 4—Randy Holihan
District 6—Alexa Dowlen

District 5—Joshua Brown
District 7—Charlotte Hobbs

SOLID WASTE COMMITTEE: Appointed At-large by City Council

Meet Quarterly on the second Thursday @ 6:30 pm at City Hall Chambers 1600 Nela Avenue

The Committee assists Staff to compare service proposals from various solid waste companies and present a recommendation to Council.

Board Member—Steve Jackson
Board Member—Clay Van Camp
Board Member—Richard Weinsier

Board Member—Todd Tatum
Board Member—Frank Noge

Board Member—OPEN
Board Member—Kate Durni

SPECIAL EVENTS COMMITTEE: Appointed At-large by City Council

Meet on the second Wednesday every month @ 6:00 pm at City Hall Chambers 1600 Nela Avenue

The Committee plans and executes special events (I.e., Holiday Tree Lighting Event) for our citizens.

Board Member—Maggie Burdette
Board Member—Holly Bobrowski
Board Member—Nicholas Fouraker

Board Member—Betty DeJarnette
Board Member—Kathy McCoy

Board Member—Lora Brannan
Board Member—Craig Huff

BUDGET COMMITTEE: Appointed by District by City Council

Meet on the Friday before the 2nd CC Tuesday meeting every month @ 3:00 pm at City Hall Chambers 1600 Nela Avenue

The purpose of the Audit Committee is to serve in an advisory capacity to the City Council in the selection of an auditor to conduct the City's annual financial audit and for other purposes as directed by City Council

District 1—Clay Van Camp
District 2—Rick Wilson
District 3—Charlotte Brown

District 4—OPEN
District 5—Rick Miller

District 6—Nash Shook
District 7—Ralph Yarborough

CITY STAFF

City Hall (Mon-Fri: 8:00 am—5:00 pm)
1600 Nela Avenue
Belle Isle, FL 32809
Facebook: cityofbelleisleflorida
Website: www.belleislefl.gov
Phone: 407-851-7730 / Fax 407-240-2222

POLICE DEPARTMENT

Administrative Office (Mon-Fri: 8:00 am—4:00 pm)
1521 Nela Avenue
Belle Isle, FL 32809
Facebook: belleisleflpolicedepartment
Administrative Offices: 407-240-2473
Non-Emergency Number: 407-836-4357

Best Management Practices

Stormwater 101

WHAT IS STORMWATER?

Stormwater is the rain that lands on our yards, streets, parking lots and buildings and then either enters the storm drain system or runs directly into a lake or stream.

How does stormwater get polluted?

As stormwater flows over our lawns, driveways, and parking lots, it picks up fertilizers, oil, chemicals, grass clippings, litter, pet waste and anything else in its path. A network of storm drains, pipes, ditches, and swales then transport the stormwater along with these pollutants into collection ponds. Pollutants that enter this system may eventually end up in our lakes. In some cases, stormwater systems direct their discharges right into our lakes, streams and rivers.

By the way... Storm drains, also known as inlets, are the openings you see along curbs and in streets and parking lots. *Water that enters storm drains does not go to a wastewater treatment facility, and may flow directly into a lake with no treatment at all.*

What are some common pollutants and how do they affect water quality?

Sediment can cloud the water and make it difficult or impossible for aquatic plants to grow. Sediment can also destroy aquatic habitats. Principal sources include construction sites and exposed materials on residential properties (dirt, gravel, grout, cement, etc.).

Excess nutrients can cause algal blooms. Algal blooms also block sunlight needed for aquatic plants to grow. When algae die, they sink to the bottom and decompose in a process that removes oxygen from the water. Fish and other aquatic organisms are negatively impacted by water with low dissolved oxygen levels. Principal sources include the nitrogen and phosphorus in fertilizer, yard debris, pet waste, agricultural runoff and septic systems.

Bacteria and other pathogens can wash into swimming areas and create health hazards, often making lake health advisories and boat ramp closures necessary. Principal sources include pet waste and unmaintained septic systems.

Trash and debris washed into waterbodies can choke, suffocate or disable aquatic life like birds, fish, turtles and otters. Examples include plastic bags, balloons, bottles and cigarette butts.

Hazardous waste like insecticides, pesticides, paint, solvents, used motor oil and other auto fluids can poison aquatic life. Land animals and people can become sick from eating diseased fish or ingesting polluted water. Principal sources include residential, commercial or industrial dumping or runoff, including leaks from automobiles.

The following pages will help you prevent the above issues and limit negative impacts to water quality.

Welcome! Whether you've recently purchased a new lakefront home, or are a longtime resident, you are part of a community of homeowners dedicated to maintaining the health and water quality of more than 600 named lakes in Orange County. Protection of our lakes and the ecosystems they support is crucial to providing Orange County residents healthy outdoor spaces in which to fish, boat, play and live.

Along with keeping the lake healthy, as a property owner you can also help ensure the safety of others. Acquiring the proper dock construction and shoreline vegetation permits not only protects water quality, but will help your friends, family and neighbors recreate safely. We hope you will take some time to review the information. The City of Belle Isle and Orange County depends on lakefront residents like you to make responsible decisions that will keep our lakes safe, clean and healthy for generations to come.

We will continue to post Articles for Public Information in our Connection Newsletter.

Contacts to know:

Florida Department of Environmental Protection
407-897-4100
www.floridadep.gov/water-topics

Florida Fish and Wildlife Conservation Commission Office of Invasive Plant Management
407-858-6170
www.myfwc.com/wildlifehabitats/invasive-plants

Orange County Environmental Protection Division 407-836-1400 | epd@ocfl.net
www.orangecountyfl.net/Environment



Orange County
311 non-emergency help & info

- Online Requests • Phone Calls
- Smartphone App • Web Chats

107 WATER BODIES
in Orange County are impaired and don't meet water quality standards.

YOU CAN MAKE A DIFFERENCE.

Street Sweeping

- Street sweeping prevents more than **one million pounds** of debris from entering lakes every year.
- Street sweeping can occur on any street, however, curbed roads are preferred. The curb collects debris, preventing it from washing away until the sweeper picks it up.
- Yard waste should never be blown onto pavement or asphalt. Yard waste should be bagged, or blown back into the grass.
- Avoid parking on the street when sweeping is scheduled, contact the Environmental Protection Division (EPD) for more information.
- Sweeping routes maintained by EPD are funded by special taxing districts established around some lakes.



As rainwater flows, it gathers pollutants and enters directly into nearby lakes through storm drains. Street sweeping is used to collect dirt and debris from roads in order to prevent excess nutrients and harmful chemicals from contaminating our water.

Manage Yard Waste

- Never blow lawn clippings into streets, lakes, or storm drains.
- Use leaves and pine needles as mulch.
- Compost yard waste and kitchen scraps.
- Pick up trash, litter and pet waste.

The City was made aware that residents are blowing their leaves in the street. You can be issued a fine for doing so. No City policy states residents can blow leaves in the street with the idea that the street sweeper will come by that day or in a day. Please, rake up your leaves and dispose of them properly. ■

Street sweeping is intended to collect stormwater-driven debris from roads only. Report dumping of oil, soaps, fertilizer, paint, grease, litter, yard waste or other contaminants.

**Environmental Protection Division
407-836-1400 www.ocfl.net/epd**

Best Management Practices