



City of Belle Isle
1600 Nela Avenue
Belle Isle, FL 32809
407-851-7730

PRSRT STD
U.S. POSTAGE
PAID
ORLANDO, FL
PERMIT NO. 4067

As we plan for the City's future, public participation is crucial for meeting the needs of the present and for years to come. Throughout the year, the City has been working on updating the nine (9) elements in the City's Comprehensive Plan. These elements include Conservation, Housing, Intergovernmental Coordination, Recreation and Open Space, Future Land Use, Capital Improvements, Infrastructure, Public School Facilities, and Transportation Elements. These (9) elements must be reviewed and adopted by March 2025 for the State's approval. Additionally, in a regional effort to address roadway safety, Belle Isle, and other local municipalities have worked to create a Vision Zero Action Plan. This Action Plan not only reflects the feedback of residents, but also includes crash data reports, city policies, and the City's Feasibility and Transportation studies from the past. Follow along on the development of these initiatives by contacting City Hall or visiting the City's webpage.

A BRIEF HISTORY OF BELLE ISLE

WE WELCOME EVERYONE TO JOIN TOGETHER, LEARN ABOUT OUR RICH HISTORY, AND CELEBRATE THE CITY OF BELLE ISLE'S 100TH BIRTHDAY THROUGHOUT 2024!

- 1800-1900**: Timucua live in Belle Isle on Lake Conway. These Native Americans comprise one of the largest indigenous groups in Florida.
- 1869**: Poet William Wallace Harney's homestead, constructed of native pine and turrets, is called "Castle in the Pines." Thus, Pine Castle is named.
- 1924**: Belle Isle settlers gather to name the town at the Thompson Gregg's Pavilion on Pleasure Island. C.H. Hoffer is elected as the City's first Mayor.
- 1928**: Belle Isle is annexed into Orange County, and government business ceases.
- 1954**: Orange County plans to use Lake Conway for stormwater drainage. Belle Isle residents reinstate the City and its government. Millard Sullivan is elected Mayor.
- 1972**: Florida state legislators reaffirm the City Charter. City Hall is dedicated as "Dexter Hall" in memory of the first mayor to pass away while in office, Mayor Ross Dexter.
- 1988**: City Manager-Council form of government is adopted.
- 2008**: A new city seal featuring the Great Blue Heron is adopted.
- 2009**: The Belle Isle Police Department is established.
- 2010**: Cornerstone Charter Academy agrees to open its doors on Belle Isle property.
- 2016**: The City Council purchases Wallace Field.
- 2020**: The City Council purchases the Bank of America property.
- 2022**: Sienna Place is annexed into the City of Belle Isle.
- 2024**: The City Council approves the build-out of the Cornerstone Charter Academy Campus.

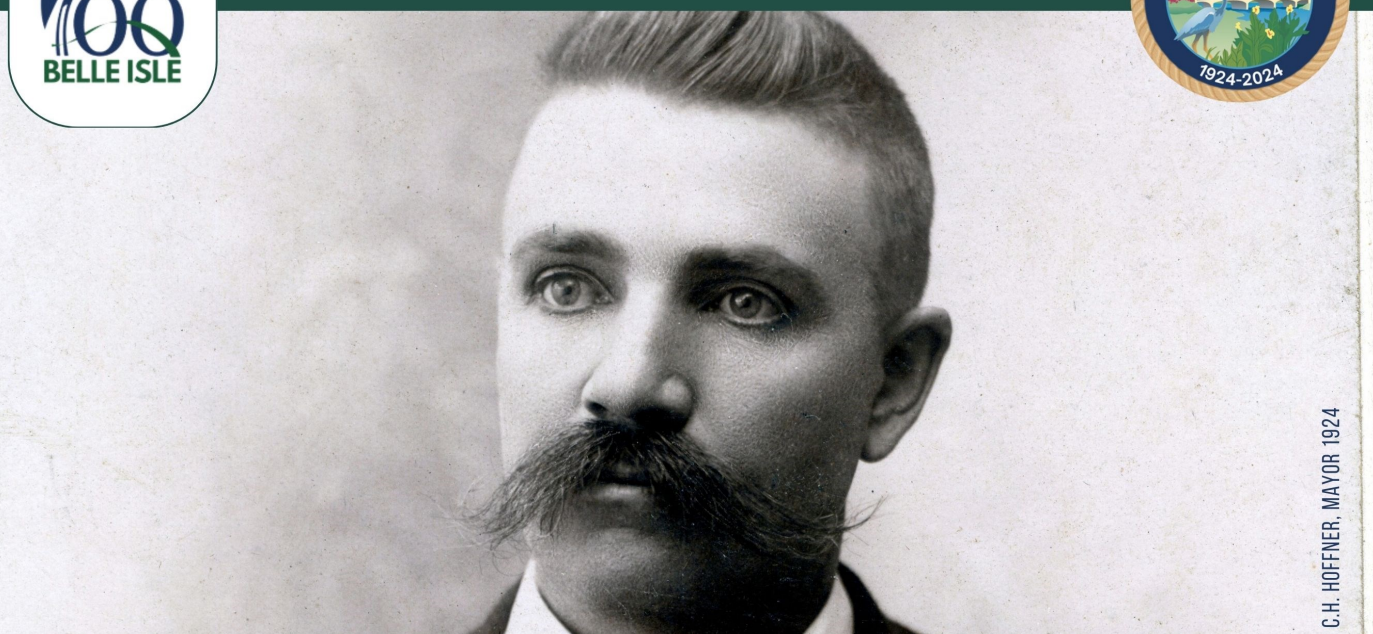
CENTENNIAL CELEBRATION
100TH ANNIVERSARY
OCT 19, 2024

COMMEMORATIVE MERCHANDISE



CELEBRATING 100 YEARS

CITY OF BELLE ISLE - 1924-2024



C.H. HOFFNER, MAYOR 1924

Resiliency, Unity, and a Shared Vision

Message from

City Manager, Rick Rudometkin

As we embark on 100 days of centennial festivities and stand on the start of an extraordinary milestone, I am pleased to serve as your City Manager during the centennial year of our treasured City. This occasion presents a unique opportunity for us to come together as a community, reflect on our history, and celebrate what has shaped the character of Belle Isle.

As you walk through our streets and neighborhoods, you can't help but feel a sense of pride and ownership. Every corner of Belle Isle seems to tell a story. The grand live oak trees in the city stand as a silent witness to the passage of time and the identity of this very unique place. The Timucua people first inhabited the area circa in the 9th century. In 1924, Mr. C.H. Hoffner was elected the first mayor when Belle Isle did not amount to much more than a scattering of houses and open cattle range. At first, there were approximately 300 residents; today, we have a population of 7,020 and growing.

The centennial celebration will occur throughout 2024, with the recent kick-off "Boogie on the Bridge" party and gathering, our tree planting at Venetian Park, and the upcoming year-end celebration in October.



CENTENNIAL ART WORK BY VICKI LITTELL

Centennial Countdown – Oct 19
100 Days 4 Hours 26 Minutes 56 Seconds

CELEBRATING 100 YEARS

CITY OF BELLE ISLE - 1924-2024

RESILIENCY, UNITY AND A SHARED VISION

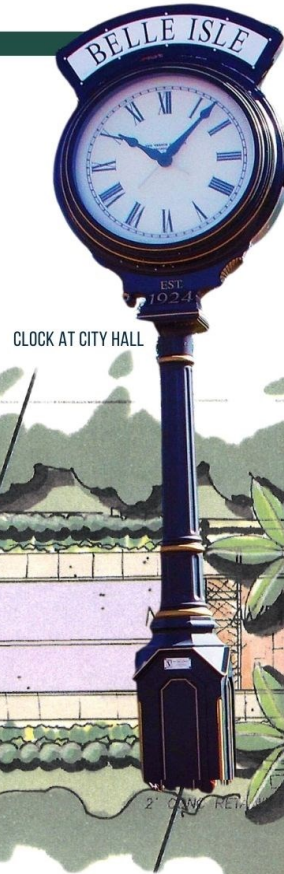
CONT'D

We have the privilege of commemorating a century of growth and working with the community to make these centennial celebrations truly remarkable. By engaging in the centennial celebrations, you become integral to this historic moment.

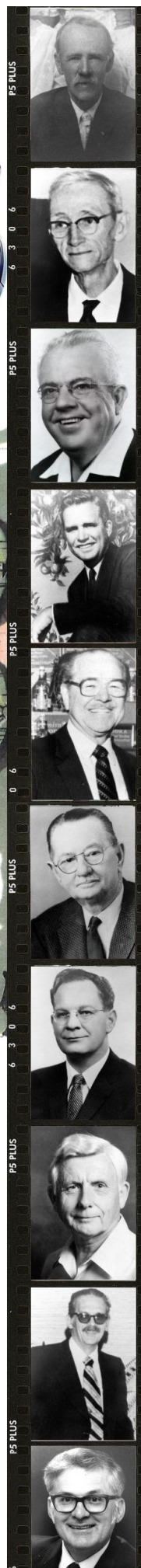
This unity and shared vision does not end with our anniversary. As we face the future, let's not forget what brought us all here in the first place: a ballot vote of more than two-thirds of those present creating a community that provides the continuation and preservation of its natural resources - the Conway Chain of Lakes and beautiful oak trees. We honor that passion with our special Centennial cover artwork focusing on a theme we highlighted this year: Resiliency, Unity, and a Shared Vision - Let's Celebrate Belle Isle.

Finally, we offer special thanks to our Mayor, Council, Staff, Boards, and Committee members. Together, we look forward to a deeper partnership with our community to keep the hidden gem we call home for the next 100 years.

I hope you will consider joining us at this extraordinary milestone and contribute to the success of celebrating our 100 years and pave the way to a promise for a thriving future with sponsorships, volunteering, and sharing photos and stories that will be incorporated into a virtual book. For more information, please contact us at 407-851-7730 or cityclerk@belleislefl.gov. Thank you for your unwavering commitment to Belle Isle; let's make this a celebration to remember - **Celebrate Belle Isle!**



CLOCK AT CITY HALL



BE PART OF THE HISTORY

OFFICIAL BALLOT
TOWN OF BELLE ISLE
TUESDAY, MAY 15, 1928
Make a cross mark (X) before the name of the candidate of your choice.
FOR MAYOR
Vote for one:
A. I. LANCASTER
A. W. REED
FOR TOWN CLERK
Vote for one:
LEONA HURRY
BARGER

MINUTES OF MEETING OF INCORPORATION 1924

At 7:30 P. M., April 25th, 1924, the following named qualified electors and registered voters, residing within the district hereinafter described, met at Thompson Gregg's Pavilion on Pleasure Island, Orange County, Florida, to-wit: A. Q. Lancaster, T. L. Curry, C. H. Hoffner, H. L. Hashbarger, G. A. Hashbarger, Edna I. Hoffner, Alma C. Dovel, Viola Curry, Jane E. Rhan, Florence C. Rhan, Mary Wigman, Marian Grier, Dora Crandall, Arthur Crandall, William Wigman, H. C. Allen, Arkansas Brumley, Sarah C. Lancaster, Harriett C. Hough, Lora Dell Sullivan, Alice L. Tyner, Millard C. Sullivan, D. Blackstone, S. Frank C. Tyner, W. R. Rhan, C. B. McCaughan.

T.L. CURRY-FIRST CITY CLERK.

J.G. TYNER-ONE OF THE 1ST MEMBERS OF THE CITY COUNCIL

Pleasure Beach Fla. 6-17-23

1971

TEEN COUNCILMAN BELLE ISLE FIRST - LARRY CURRY

MAYORS: ARTHUR LANCASTER, MILLARD SULLIVAN, LEO BARRY, WH PRICE, EG LANGSTON, JACK HOLLOWAY, ROSS DEXTER, TOM FOWLER, WILLIAM HAND, EARL DEIMUND, FRANK BORGAN, MAURO RIGANTE, CHARLIE SCOTT, BILL HAND, BILL BROOKS, LYDIA PISANO, AND NICHOLAS FOURAKER

City Hall
1600 Nela Avenue
Belle Isle, FL 32809
407-851-7730
www.belleislefl.gov

Belle Isle
Police Department
1521 Nela Avenue
Belle Isle, FL 32809
407-240-2473

City Manager
Rick Rudometkin
rickr@belleislefl.gov
689-318-0257

Chief of Police
Travis Grimm
tgrimm@belleislepolice.org
407-412-0123

Mayor
Nicholas Fouraker
mayor@belleislefl.gov
407-868-1317

Council Members
District 1
Frank Vertolli
district1@belleislefl.gov
407-717-6772

District 2
Holly Bobrowski
district2@belleislefl.gov
689-500-8508

District 3 - OPEN
407-851-7730

District 4
Jason Carson
district4@belleislefl.gov
407-717-7855

District 5
Beth Lowell
district5@belleislefl.gov
407-457-2427

District 6
Stan Smith
district6@belleislefl.gov
407-717-8017

District 7
Jim Partin
district7@belleislefl.gov
407-717-6545

www.belleislefl.gov

2024